

PartnerLink

EDI solution for *Dynamics365*



Microsoft
Dynamics 365



Common EDI Challenges

Exchanging business data with other organizations can be expensive and technically challenging:

- Many EDI solutions fail to scale to high volumes and become sluggish under peak loads.
- Standalone EDI systems need to be maintained separately from ERP platforms and create a disconnect between EDI processing and other business processes.
- Your partners will probably use different technology platforms and data formats than your own.

Complete EDI, B2B
and API solution for
frictionless partner
communication

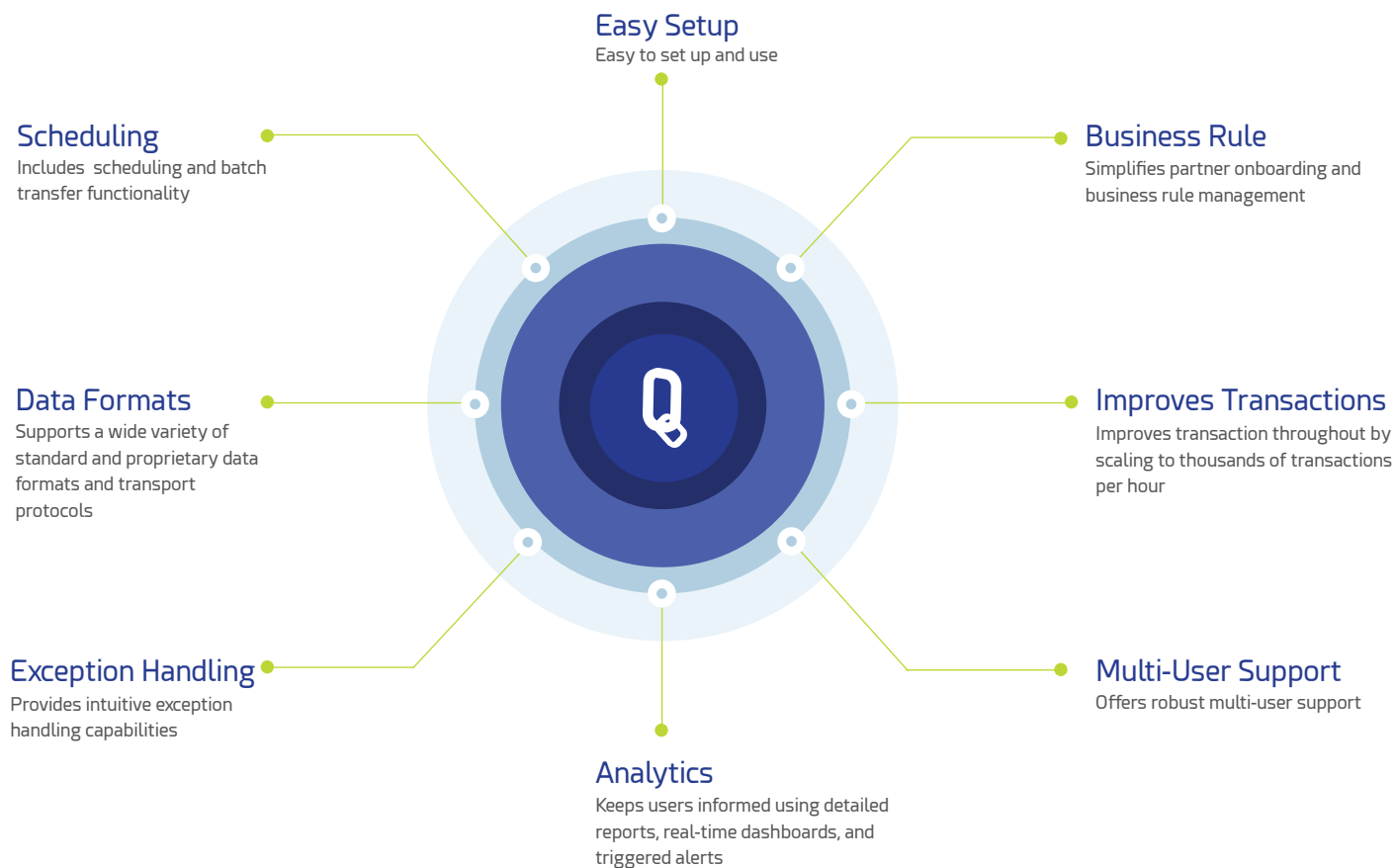
- Each partner has its own set of business rules for data validation, which results in delays while preparing to connect to a new partner.
- Inconsistencies or failure to comply with your partners' business rules will lead to expensive chargebacks and rework.
- Many traditional EDI services charge by the transaction, which negatively impacts margins and often discourages smaller partners from establishing lines of communication.



Introducing PartnerLinQ

Visionet's PartnerLinQ is a highly scalable, reliable and configurable **EDI & B2B** interchange solution that integrates natively with Microsoft Dynamics 365 for operations and supports integration with any other ERP system.

PartnerLinQ is the perfect tool for B2B communication with both EDI and non-EDI trading partners:



Easy Deployment

PartnerLinQ is designed for rapid implementation. Its scalability and flexibility make it a perfect data interchange solution for any organization. Capable of processing thousands of transactions per hour, PartnerLinQ can transmit data between large enterprises and its support for both VAN-based and direct-to-partner connections, allows it to interface easily with existing EDI investments.

With support for either cloud-based or on-premise deployment, PartnerLinQ gives businesses the freedom to choose their preferred method of implementation. While most organizations prefer the "access anywhere" convenience and low ownership cost of cloud deployment on Microsoft Azure, others require on-premise deployment for reasons such as enhanced security compliance. PartnerLinQ is a perfect choice in both scenarios.

PartnerLinQ is
perfect for cloud-based
or on-premise
deployment

Centralized Management

PartnerLinQ users can easily monitor EDI performance at a glance using the platform's centralized management console. The console's intuitive design helps users quickly identify transaction errors and their causes, and displays statistics on the progress of various inbound and outbound transaction sets. PartnerLinQ also generates alerts whenever specific events occur, which helps users address errors as soon as they emerge.

This helps
users address
errors as soon
as they emerge

Easy Partner Onboarding

With its EDI-optimized business rule engine and extensive pre-configured business rule library, PartnerLinQ greatly improves the partner onboarding process. Instead of defining each partner's business rules from scratch, users can select existing sets of rules from the rule library and quickly customize them if needed. Rule validation can be configured at the partner, document, segment or field level, giving users fine-grained control. Once configured, this validation logic can be saved for convenient reuse with other partners and documents without resorting to hardcoding or code duplication.

PartnerLinQ supports communication with partners that already have EDI systems, as well as direct B2B transfers to non-EDI organizations. Its support for a wide range of EDI formats and other common data interchange standards like XML and JSON ensures reliable and secure communication with any partner organization. All major transport protocols are also supported, including AS2, EDIFACT, FTP, SMTP and X12, as well as custom formats.



It supports communication with EDI systems, as well as direct B2B transfers to non-EDI organizations



PartnerLinQ lets users configure daily or weekly bulk transfers.

Job Scheduling and Reporting

Users can process much higher transaction volumes with PartnerLinQ's job scheduler and batch job capabilities. The job scheduler allows organizations to send data at a specific time of day without direct user involvement and batch jobs allow multiple transactions to be processed at once. These features let users configure daily or weekly bulk transfers, ensuring that they never forget to send their partners business-critical data.

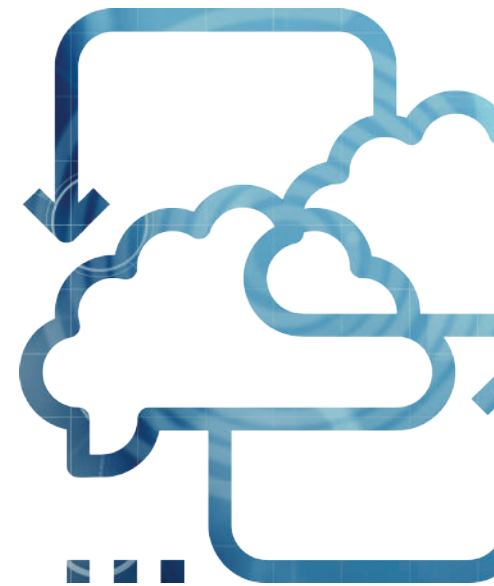
PartnerLinQ comes with pre-configured reports that give users quick access to details about key EDI metrics. In addition to these out-of-the-box reports, advanced support for generating ad-hoc reports lets users quickly combine any set of measures and dimensions to produce custom reports about virtually any aspect of EDI operations.

ERP Integration

Visionet has designed PartnerLinQ to integrate natively with Microsoft Dynamics 365, and also provides robust support for integration with any other ERP system. ERP integration provides ease of use and facilitates efficient transaction processing. PartnerLinQ operates as an independent subsystem that remains decoupled from your ERP deployment. This allows each platform to be reconfigured separately, without requiring modifications to the other.

PartnerLinQ's graphical data mapper conveniently converts data between ERP and EDI formats. Data fields are displayed in an easy-to-use visual format, allowing users to create drag-and-drop connections between source and target fields. Search functionality helps users find elements in large data mappings, and the data mapper automatically connects child elements where appropriate.

PartnerLinQ also provides support for integration with e-commerce platforms like Shopify, Magento and many others. Built-in support allows companies to shift seamlessly between EDI and API-based integrations.



PartnerLinQ's graphical data mapper conveniently converts data between ERP and EDI formats.



Conclusion

Rapid conversion between ERP and EDI data formats, intuitive partner onboarding and exception handling, centralized management, customizable reports and support for scheduled batch transactions make PartnerLinQ the right data interchange solution for businesses of all sizes.

Ensure compliance and reduce communication costs with PartnerLinQ.

Choose **PartnerLinQ** today!

Please contact Visionet Systems for a free consultation.



PartnerLinQ



FOR MORE INFORMATION

 sales@visionetsystems.com

 www.visionetsystems.com



Global Headquarters

4-B Cedarbrook Drive,
Cranbury, NJ 08512

 +1 609 452 0700
 +1 609 655 5232

Processing Center

183 Industry Drive
Pittsburgh, PA 15275

 +1 412 927 0226
 +1 412 265 4182