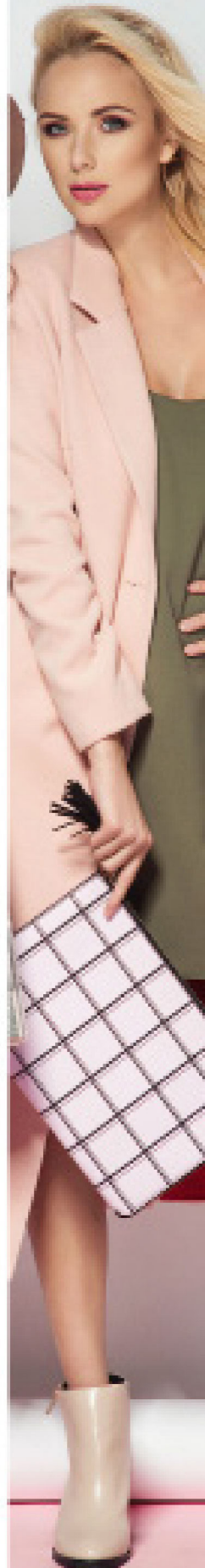


# Enterprise Apparel & Footwear Industry Solution



**Microsoft  
Partner**



Gold Cloud Platform  
Gold Cloud Business Applications  
Gold Cloud Productivity  
Gold Datacenter  
Gold Data Analytics  
Gold DevOps

# Resilient supply chain for apparel & footwear with digital sourcing and intelligent planning

Hautelogic by Visionet Systems is built on powerful Dynamics 365 Finance & Operations. It enables accelerated implementation of intelligent demand & supply planning, digital sourcing & manufacturing, wholesale, eCommerce, POS/ store operations, supply chain integration and EDI for fashion, athletics, apparel, footwear brands which can be deployed incrementally according to individual customer needs



## Challenges



Apparel & footwear industry is facing stiff challenges in a wide range of areas. One of the major area is the off-shore production model where duties, shipment and on-shore/near-shore production capabilities are quite challenging to handle. Furthermore, its antiquated technology, disconnected systems, operations silos and lack of visibility is making it harder to compete and thrive. In addition, the evolution of omnichannel, subscriptions, and emerging business models require fluent and highly connected ecosystems which most companies are lacking.

## Ideal Solution



1 - Flexible: Our solution is adaptable based on the priorities set by your business. It can change sourcing methodology and can be creative with distribution network from 3PL to self-warehouse  
2- Scalability: Market evolution curtails to the fact that brands need to scale (locally or globally). Hautelogic by Visionet Systems offers untenable scalability backed by intelligent demand and Supply Chain to support omnichannel sales within MS based cloud native solutions.  
3- Adaptable: Hautelogic by Visionet Systems is a fully integrated tailored solution that can be readily adopted by any brand. It offers high speed to deployment, rapid adoption, and enables faster ROI.

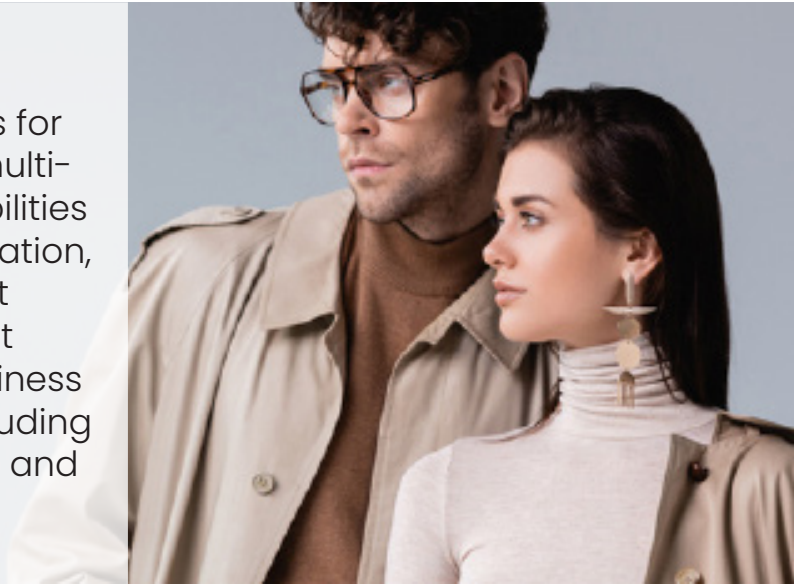
## Desired Outcomes



1 - Envision end-to-end connectivity and visibility across supply chain that includes customers, suppliers, distribution centers, 3PM and trade forwarders  
2 - Revenue and Channel Diversification: Supplement your growth through Brand Recognition and an adaptive supply chain by expanding into new sales channels  
3 - Flexible: Instill a resilient supply chain to adopt multiple channels while mitigating risks

# Resilient supply chain for Apparel & Footwear Industry

Hautellogic by Visionet Systems is a state-of-the-art supply chain solution that unifies all operations for fashion retailers. The solution is multi-dimensional in terms of its capabilities that include multi-channel integration, real-time analytics and intelligent automation. It leverages Microsoft Dynamics 365 that puts your business in complete control of facets including supply chain, finance, commerce and business operations.



## Optimize Finance & Operations

- Native integration with D365 F&O, D365, and Business Central to deliver an EDI-ready ERP
- Rapid partner onboarding by leveraging thousands of pre-configured EDI transactions and partner mappings
- Collaborative vendor management
- Rule-based order prioritization and allocation
- Multi-channel inventory visibility

## Connected Commerce

- Integrated DTC and B2B digital selling with Dynamics Commerce and/or third-party platforms
- API support for Shopify, BigCommerce, Magento, Jet, Amazon, DHL, UPS, and other online commerce channels
- Built-in AS2 solution for faster, secure, and cost-effective business communication
- Unified management and workflow for all business communication channels

## Resilient Supply Chain

- Efficient business rule manager for frictionless partner onboarding
- Easy-to-manage and supports a wide variety of EDI, XML, and API standards
- Infinitely scalable, cutting-edge, server-class architecture on Azure platform to handle extreme seasonal spikes
- Instant alerts on critical issues to help 'on-the-fly' remediation, without any hardcoding
- Shipment and tracking support for small packages
- Process-driven architecture to deliver beyond traditional point-to-point EDI interchange

## Business Operations Analytics & Customer Insights

- Ready integration with AI-enabled systems to gain insights and drive deep customer engagement
- Advanced analytical reporting capabilities powered by Azure's serverless, scalable event-processing engine
- Browser-based access with built-in reporting capabilities

# Apparel & Footwear Industry Solution



Hautellogic by Visionet Systems is a modern digital solution for apparel & footwear, wholesalers, manufacturers, distributors and multi-channel retailers. It allows enterprises to build an optimized, end-to-end unified digital commerce platform with fully connecting supply chain operations, sales channels and partner network.

## Enhance Omnichannel Customer Experience



Personalized omnichannel experience for consumers that deliver top-notch customer service

## Real-Time Analytics



Embedded insights for real-time operational visibility to departmental heads for accurate decision making

## Efficient Supply Chain Management

Through multiple preconfigured business processes and usage of modular design, Hautellogic by Visionet Systems implements efficient supply chain mechanisms to gain higher agility





# Enterprise Cloud Solution

Hautellogic by Visionet Systems puts you in complete control of your supply chain connectivity. It delivers end-to-end visibility and control via deep connectivity across your supply chain network, eCommerce channels, service providers, and all types of supply chain partners across the globe. Whether you send/receive/process a few thousand or tens of millions of transaction every month, Hautellogic by Visionet Systems is available to you based on pay as you go model



## Product Data Management

Provide fully integrated light weight PDM capability for Tech Pack generation, costing sheets, pricing, barcodes management

## Apparel Sourcing & Manufacturing

Collaborative sourcing with production tracking, factory quality management and fabric tracking

## Wholesale Management

Wholesale O2C support for order bookings, bulk distribution, allocation, ATP/ ATS, Drop Shipments and returns management

## Order fulfillment & Shipping

Multi segment inbound shipping tracking, outbound shipment planning and pick ticket release

## Digital Commerce (B2B, B2C, B2B/C)

Omni channel enablement with POS/ 3rd party commerce connectivity and support for payments, gift cards, returns, coupons & loyalty

## Finance & Accounting

GL, AP/ AR, Cash & Bank Management, financial reporting & credit management

## Supply Chain Connectivity

Connectivity with customers, vendors, vendors/ factories, 3PL, carriers/ freight forwarders through Web Services/ API/ EDI/ File communication

## Enterprise Analytics for Apparel/ Footwear

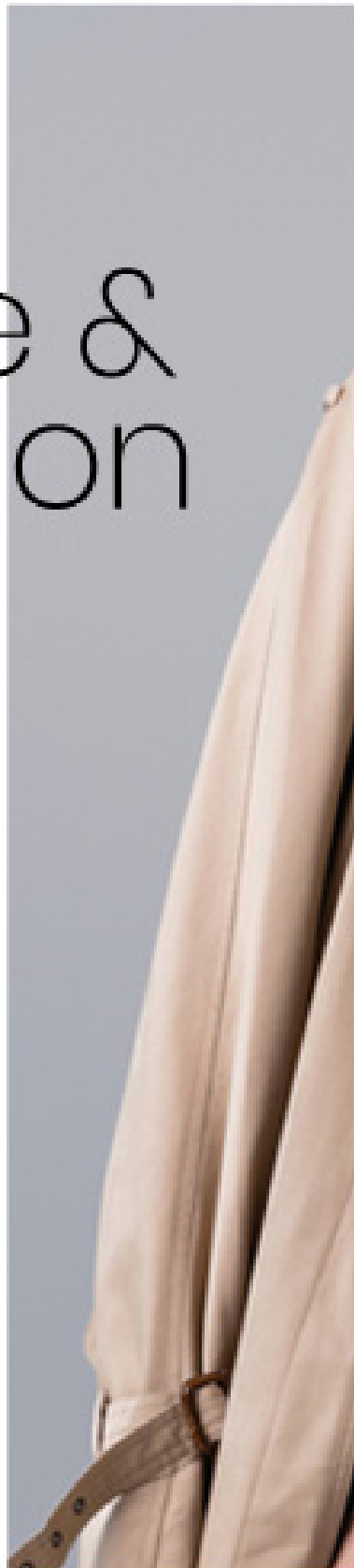
Framework for consolidated & real-time retail, supply chain & financial reporting with pre-built KPIs, reports & dashboards

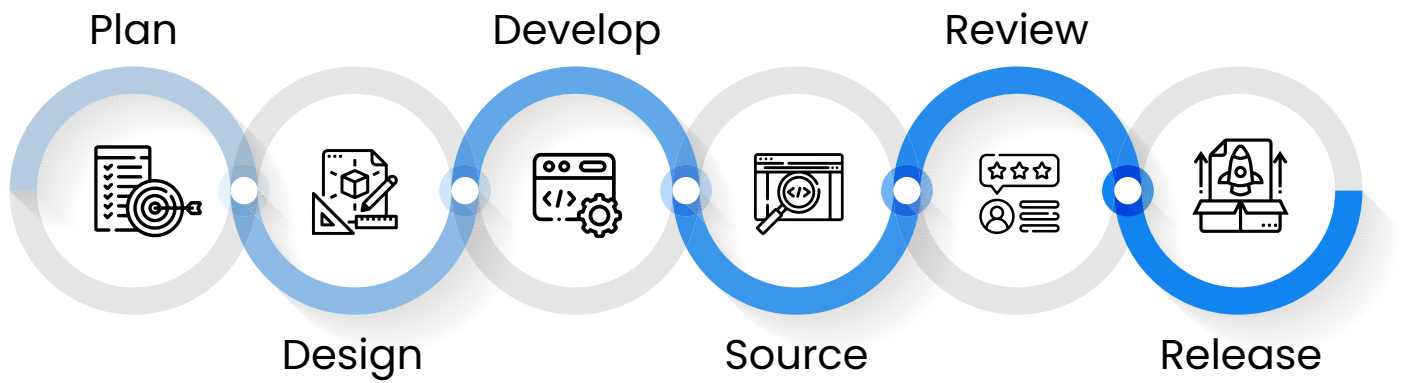
# Feature Map

Foundation					Collaboration & Reporting		Planning & Optimization
Product	Sales	Purchase	Production	Inventory & Warehouse	Vendor Portal	Dashboards	Planning
Size Ranges	Customer Store & DC	Vendor Factories	Apparel/Footwear BOM	Parcel Shipping Integration	Forecast Visibility	Vendor Performance	Supply Schedule GridView
Size Weights	Customer Order Overrides	Purchase Change Tracking	Master Production Order (MPO)	GS1/UCC128 Label Printing	Planned Purchases	Purchase Milestone Tracking	Planning Workbench
Price Upcharge By Sizes	Sales Order Line Group	Landed Cost Charges	Production Grids	Build & Break Prepack	Inbound Packing	Customer Delivery Performance	
GTN Management/UPC Inquiry	Bulk Order Management	Purchase Milestone Tracking	MPO BOM (Matrix)	Item Purchase Price Inquiry	Inbound Shipment Tracking	Outsourced Production Overview	
Inventory Advice Profile	AR Factor/Credit Management	Purchase Milestone Workspace	MPO Material Allocation	Item Cost Inquiry	Purchase Milestone Tracking	Production Material Tracking	
Fashion Attributes	Sales Order Allocation	Purchase Mass Cancellation	MPO Material Transfers	Parcel Carrier Rate Shopping	Purchase Milestones Feedback	Demand Allocation	
NRF Colors & Sizes	Wholesale Customer Catalog	Purchase Mass Maintenance	Material Batch Attributes		Vendor Items		
Seasonal Deliveries	SO Change Tracking	Purchase Grid View Report	MPO Route		Vendor Price Lists		
Forecast Uploads	SO Mass Cancellation	PO Line Group & Grid Entry	MPO Picking Lists		Vendor Quality Orders		
Cost Estimation	SO Mass Maintenance	PA Line Group & Grid View	Service PO Workbench		Material Requirements Visibility		
Duty Rates Master	SO Quantity Maintenance	Agreement Release Inquiry	Production Order Change Tracking		Material Consumption		
Prepack Definition	Prepack Order Entry	Prepack Order Entry	MPO Workspace & Inquiries		Service Orders Workbench		

# Optimize Finance & Operation

Move beyond transactional financial management to proactive operations that enhance decision making, protect revenue, mitigate risks, and reduce costs. Microsoft Dynamics FO delivers intelligent budgeting and forecasting and holistic reporting analytics. With Microsoft Dynamics FO it is simpler to integrate and customize different modules and components of your business and enhance productivity with optimized financial operations.





## Features

Seasons & delivery schedule management	Materials management	Construction sets & points of measures	Measurement templates
Placeholders management	Product specifications	Bill of materials	Product line & seasonal calendar
Fashion attributes	Size ranges & weights	NRF colors & sizes library	Cost estimation
HTS & duty rates	GTIN management & reporting	Inventory advice profile	Prepacks management

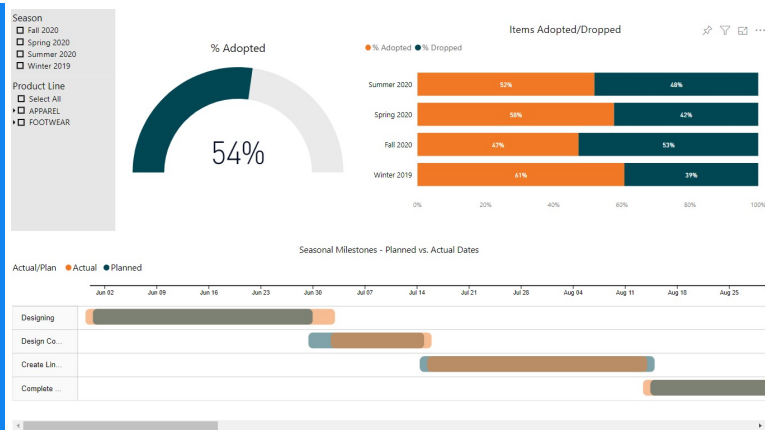
- Native integration with D365 F&O, D365, and Business Central to deliver an EDI-ready ERP
- Rapid partner onboarding by leveraging thousands of pre-configured EDI transactions and partner mappings
- Collaborative vendor management
- Rule-based order prioritization and allocation
- Multi-channel inventory visibility



# Hautellogic by Visionet Systems

## Optimize Finance & Operations

### Line Adoption Dashboard



### Cost Estimation Sheets

Cost estimation sheet

Show active cost sheet

No

+ New

Delete

OverviewGeneralPrice

✓ Sheet number ↑	Estimation type	Template number	Version	Item number	Product name	Variant relation
000004	Manufacturing		10	000003	MGL All Dimensions	Table
000006	Outsourcing		10	000005	Vintage Shirt	Table
000009	Outsourcing		10	000005	Vintage Shirt	Table
000010	Manufacturing		10	0000062	LC MA	Table
000014	Manufacturing		10	000003	MGL All Dimensions	Table
000018	Manufacturing		10	000003	MGL All Dimensions	Table

+ Add lines

Remove lines

Overview

✓ Component type	Item	Color	Size	Configuration	Include	Operation	Resource Type
Material	0000062	BLUE	S	Default	Yes		
Material	000011	White	S	Default	Yes		
Material	000015	Cherry	S	Default	Yes		
Manufacturing	000003	Black			Yes	Dispense	Resource group
Manufacturing	000003	Black			Yes	Curing	Resource group

### Measurement Templates

MEASUREMENT TEMPLATE

Grade rule set

Name	PODM no	Section	Tol (+)	Tol (-)	Grade rule	Large	Medium
Shoulder Width	PT006	Top	0.25	0.25	0.25	0.25	
Waist (1/2)	PT015	Top	0.25	0.25	1.00	1.00	
Neckpoint to hip	PT023	Top	0.25	0.25	0.25	0.25	
Hip	PT024	Accessories	0.25	0.25	0.25	0.25	
Armhole front curved	PT030	Top	0.25	0.25	0.25	0.25	
Biceps (1/2) at armhole	PT032	Top	0.25	0.25	0.25	0.25	
Sleeve length from shoulder	PT05161	Top	0.25	0.25	0.25	0.25	
Chest bottom from neck p...	PT089	Top	0.25	0.25	0.25	0.25	
Neck Line	PT021	Top	0.25	0.25	0.25	0.25	
Wrist	PT2011	Top	0.25	0.25	0.25	0.25	

Measurement set

Name	PODM no	Section	Tol (+)	Tol (-)	Large	Medium	Small
Shoulder Width	PT006	Top	0.25	0.25	14.25	14.00	
Waist (1/2)	PT015	Top	0.25	0.25	15.50	14.50	
Neckpoint to hip	PT023	Top	0.25	0.25	28.75	28.50	
Hip	PT024	Accessories	0.25	0.25	40.25	40.00	
Armhole front curved	PT030	Top	0.25	0.25	23.25	23.00	

### Technical Package Generation

Technical Package Generation

Grade rule set

Name	PODM no	Section	Tol (+)	Tol (-)	Large	Medium	Small
Shoulder Width	PT006	Top	0.25	0.25	14.25	14.00	
Waist (1/2)	PT015	Top	0.25	0.25	15.50	14.50	
Neckpoint to hip	PT023	Top	0.25	0.25	28.75	28.50	
Hip	PT024	Accessories	0.25	0.25	40.25	40.00	
Armhole front curved	PT030	Top	0.25	0.25	23.25	23.00	

Measurement set

Name	PODM no	Section	Tol (+)	Tol (-)	Large	Medium	Small
Shoulder Width	PT006	Top	0.25	0.25	14.25	14.00	
Waist (1/2)	PT015	Top	0.25	0.25	15.50	14.50	
Neckpoint to hip	PT023	Top	0.25	0.25	28.75	28.50	
Hip	PT024	Accessories	0.25	0.25	40.25	40.00	
Armhole front curved	PT030	Top	0.25	0.25	23.25	23.00	

Technical Package Generation

Grade rule set

Name	PODM no	Section	Tol (+)	Tol (-)	Large	Medium	Small
Shoulder Width	PT006	Top	0.25	0.25	14.25	14.00	
Waist (1/2)	PT015	Top	0.25	0.25	15.50	14.50	
Neckpoint to hip	PT023	Top	0.25	0.25	28.75	28.50	
Hip	PT024	Accessories	0.25	0.25	40.25	40.00	
Armhole front curved	PT030	Top	0.25	0.25	23.25	23.00	

Measurement set

Name	PODM no	Section	Tol (+)	Tol (-)	Large	Medium	Small
Shoulder Width	PT006	Top	0.25	0.25	14.25	14.00	
Waist (1/2)	PT015	Top	0.25	0.25	15.50	14.50	
Neckpoint to hip	PT023	Top	0.25	0.25	28.75	28.50	
Hip	PT024	Accessories	0.25	0.25	40.25	40.00	
Armhole front curved	PT030	Top	0.25	0.25	23.25	23.00	

Technical Package Generation

Grade rule set

Name	PODM no	Section	Tol (+)	Tol (-)	Large	Medium	Small
Shoulder Width	PT006	Top	0.25	0.25	14.25	14.00	
Waist (1/2)	PT015	Top	0.25	0.25	15.50	14.50	
Neckpoint to hip	PT023	Top	0.25	0.25	28.75	28.50	
Hip	PT024	Accessories	0.25	0.25	40.25	40.00	
Armhole front curved	PT030	Top	0.25	0.25	23.25	23.00	

Measurement set

Name	PODM no	Section	Tol (+)	Tol (-)	Large	Medium	Small
Shoulder Width	PT006	Top	0.25	0.25	14.25	14.00	
Waist (1/2)	PT015	Top	0.25	0.25	15.50	14.50	
Neckpoint to hip	PT023	Top	0.25	0.25	28.75	28.50	
Hip	PT024	Accessories	0.25	0.25	40.25	40.00	
Armhole front curved	PT030	Top	0.25	0.25	23.25	23.00	

Technical Package Generation

Grade rule set

Name	PODM no	Section	Tol (+)	Tol (-)	Large	Medium	Small
Shoulder Width	PT006	Top	0.25	0.25	14.25	14.00	
Waist (1/2)	PT015	Top	0.25	0.25	15.50	14.50	
Neckpoint to hip	PT023	Top	0.25	0.25	28.75	28.50	
Hip	PT024	Accessories	0.25	0.25	40.25	40.00	
Armhole front curved	PT030	Top	0.25	0.25	23.25	23.00	

Measurement set

Name	PODM no	Section	Tol (+)	Tol (-)	Large	Medium	Small
Shoulder Width	PT006	Top	0.25	0.25	14.25	14.00	
Waist (1/2)	PT015	Top	0.25	0.25	15.50	14.50	
Neckpoint to hip	PT023	Top	0.25	0.25	28.75	28.50	
Hip	PT024	Accessories	0.25	0.25	40.25	40.00	
Armhole front curved	PT030	Top	0.25	0.25	23.25	23.00	

Technical Package Generation

Grade rule set

Name	PODM no	Section	Tol (+)	Tol (-)	Large	Medium	Small
Shoulder Width	PT006	Top	0.25	0.25	14.25	14.00	
Waist (1/2)	PT015	Top	0.25	0.25	15.50	14.50	
Neckpoint to hip	PT023	Top	0.25	0.25	28.75	28.50	
Hip	PT024	Accessories	0.25	0.25	40.25	40.00	
Armhole front curved	PT030	Top	0.25	0.25	23.25	23.00	

Measurement set

Name	PODM no	Section	Tol (+)	Tol (-)	Large	Medium	Small
Shoulder Width	PT006	Top	0.25	0.25	14.25	14.00	
Waist (1/2)	PT015	Top	0.25	0.25	15.50	14.50	
Neckpoint to hip	PT023	Top	0.25	0.25	28.75	28.50	
Hip	PT024	Accessories	0.25	0.25	40.25	40.00	
Armhole front curved	PT030	Top	0.25	0.25	23.25	23.00	

Technical Package Generation

Grade rule set

Name	PODM no	Section	Tol (+)	Tol (-)	Large	Medium	Small
Shoulder Width	PT006	Top	0.25	0.25	14.25	14.00	
Waist (1/2)	PT015	Top	0.25	0.25	15.50	14.50	
Neckpoint to hip	PT023	Top	0.25	0.25	28.75	28.50	
Hip	PT024	Accessories	0.25	0.25	40.25	40.00	
Armhole front curved	PT030	Top	0.25	0.25	23.25	23.00	

Measurement set

Name	PODM no	Section	Tol (+)	Tol (-)	Large	Medium	Small
Shoulder Width	PT006	Top	0.25	0.25	14.25	14.00	
Waist (1/2)	PT015	Top	0.25	0.25	15.50	14.50	
Neckpoint to hip	PT023	Top	0.25	0.25	28.75	28.50	
Hip	PT024	Accessories	0.25	0.25	40.25	40.00	
Armhole front curved	PT030	Top	0.25	0.25	23.25	23.00	

Technical Package Generation

Grade rule set

Name	PODM no	Section	Tol (+)	Tol (-)	Large	Medium	Small
Shoulder Width	PT006	Top	0.25	0.25	14.25	14.00	
Waist (1/2)	PT015	Top	0.25	0.25	15.50	14.50	
Neckpoint to hip	PT023	Top	0.25	0.25	28.75	28.50	
Hip	PT024	Accessories	0.25	0.25	40.25	40.00	
Armhole front curved	PT030	Top	0.25	0.25	23.25	23.00	

Measurement set

Name	PODM no	Section	Tol (+)	Tol (-)	Large	Medium	Small
Shoulder Width	PT006	Top	0.25	0.25	14.25	14.00	
Waist (1/2)	PT015	Top	0.25	0.25	15.50	14.50	
Neckpoint to hip	PT023	Top	0.25	0.25	28.75	28.50	
Hip	PT024	Accessories	0.25	0.25	40.25	40.00	
Armhole front curved	PT030	Top	0.25	0.25	23.25	23.00	

Technical Package Generation

Grade rule set

Name	PODM no	Section	Tol (+)	Tol (-)	Large	Medium	Small
Shoulder Width	PT006	Top	0.25	0.25	14.25	14.00	
Waist (1/2)	PT015	Top	0.25	0.25	15.50	14.50	
Neckpoint to hip	PT023	Top	0.25	0.25	28.75	28.50	
Hip	PT024	Accessories	0.25	0.25	40.25	40.00	
Armhole front curved	PT030	Top	0.25	0.25	23.25	23.00	

Measurement set

Name	PODM no	Section	Tol (+)	Tol (-)	Large	Medium	Small
Shoulder Width	PT006	Top	0.25	0.25	14.25	14.00	
Waist (1/2)	PT015	Top	0.25	0.25	15.50	14.50	
Neckpoint to hip	PT023	Top	0.25	0.25	28.75	28.50	
Hip	PT024	Accessories	0.25	0.25	40.25	40.00	
Armhole front curved	PT030	Top	0.25	0.25	23.25	23.00	

Technical Package Generation

Grade rule set

Name	PODM no	Section	Tol (+)	Tol (-)	Large	Medium	Small
Shoulder Width	PT006	Top	0.25	0.25	14.25	14.00	
Waist (1/2)	PT015	Top	0.25	0.25	15.50	14.50	
Neckpoint to hip	PT023	Top	0.25	0.25	28.75	28.50	
Hip	PT024	Accessories	0.25	0.25	40.25	40.00	
Armhole front curved	PT030	Top	0.25	0.25	23.25	23.00	

Measurement set

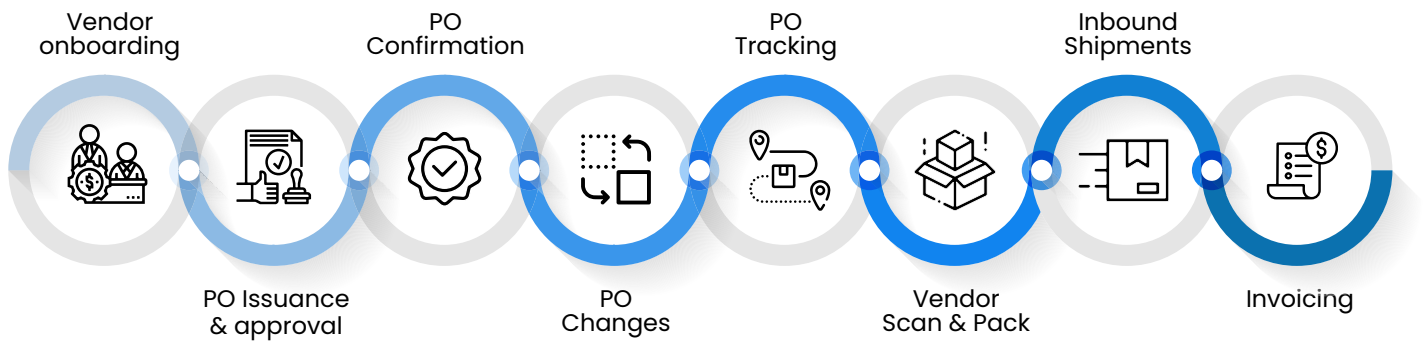
Name	PODM no	Section	Tol (+)	Tol (-)	Large	Medium	Small
Shoulder Width	PT006	Top	0.25	0.25	14.25	14.00	
Waist (1/2)	PT015	Top	0.25	0.25	15.50	14.50	
Neckpoint to hip	PT023	Top	0.25	0.25	28.75	28.50	
Hip	PT024	Accessories	0.25	0.25	40.25	40.00	
Armhole front curved	PT030	Top	0.25	0.25	23.25	23.00	

Technical Package Generation



# Connected Commerce

Hautellogic by Visionet Systems leverages Connected Commerce to offers an integrated online shopping experience for customers. The solution integrates DTC and B2B digital selling through Microsoft Dynamics Commerce and provides unified management for streamlining workflow across all communication channels.



## Features – Procurement & Sourcing

Vendor factories	Purchase change tracking	Landed cost charges	Purchase milestone tracking	Purchase mass cancellation & maintenance
Purchase grid view report	Purchase line group & grid entry	Purchase Agreement release inquiry	Prepack order management	Vendor performance

## Features – Vendor Portal

Forecast & planned purchases visibility	Inbound packing & shipment tracking	Purchase Milestone Tracking & feedback	Vendor item & price list views	Vendor quality order views
Material requirements visibility	Vendor performance scorecard	Purchase Agreement release inquiry	Prepack order management	Vendor performance

Integrated DTC and B2B digital selling with Dynamics Commerce and/or third-party platforms

Built-in AS2 solution for faster, secure, and cost-effective business communication

Unified management and workflow for all business communication channels

API support for Shopify, BigCommerce, Magento, Jet, Amazon, DHL, UPS, and other online commerce channels



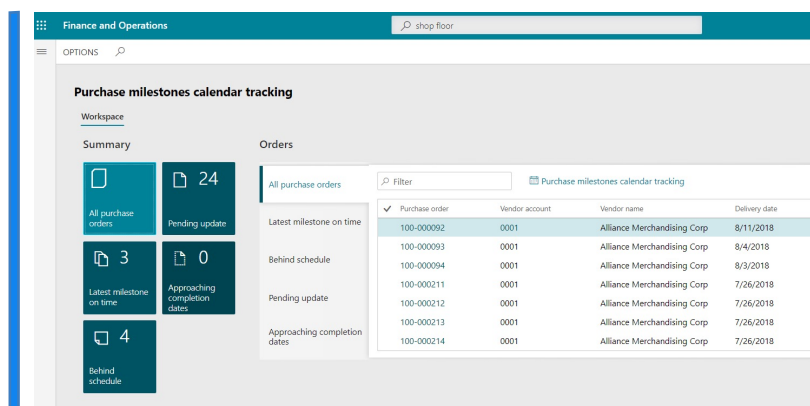
# Hautellogic by Visionet Systems

## Connected Commerce

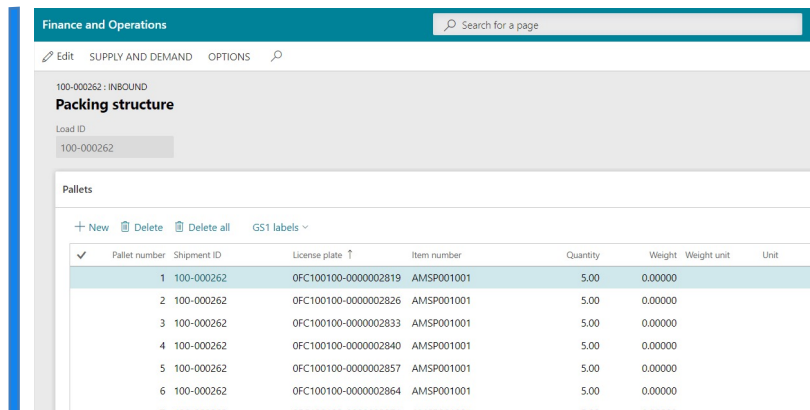
Sourcing  
performance  
dashboard



Purchase  
milestone  
tracking  
workspace



Vendor portal  
scan & pack

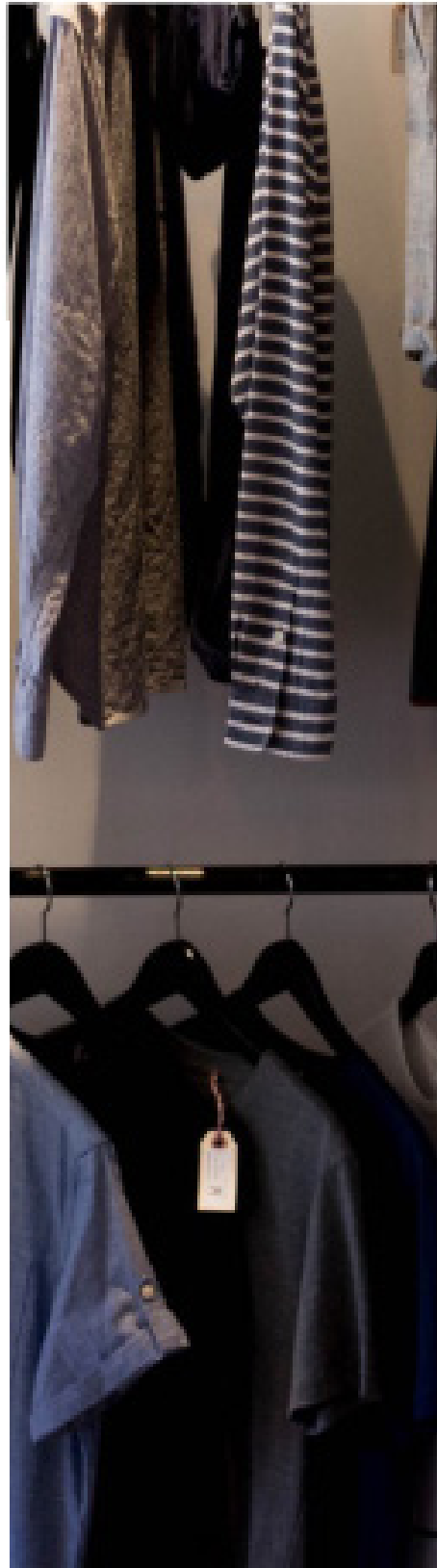


Vendor  
performance  
dashboard

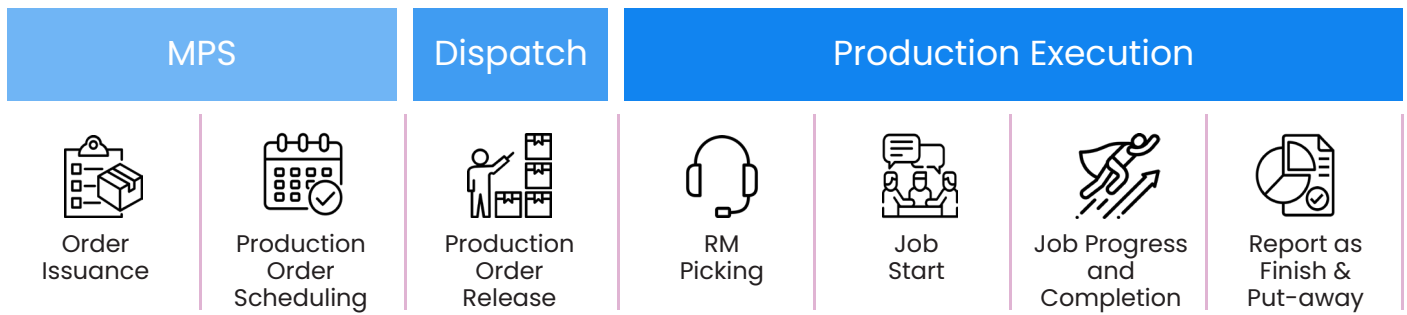


# Resilient Supply Chain

Optimize planning, production, inventory, warehouse, and transportation to maximize operational efficiency and asset productivity. Take advantage of data for robust, real-time reporting and analytics. It also enables seamless business rules manager for frictionless partner onboarding.







## Features

Master Planning Workbench	Master Production Orders
Material Allocation	Contractor Assignment
Contracted Work Orders Monitoring	Material Picking
Contractor Portal Collaboration	Work Order Receiving & Finishing
FG Receiving & Put-away	

Efficient business rule manager for frictionless partner onboarding

Easy-to-manage and supports a wide variety of EDI, XML, and API standards

Infinitely scalable, cutting-edge, server-class architecture on Azure platform to handle extreme seasonal spikes

Shipment and tracking support for small packages

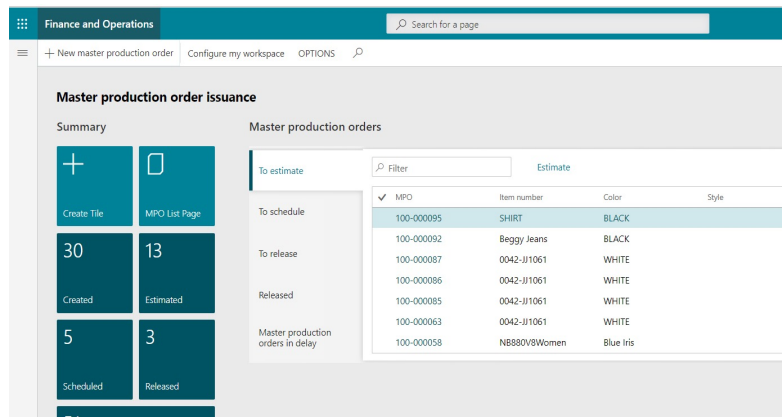
Process-driven architecture to deliver beyond traditional point-to-point EDI interchange



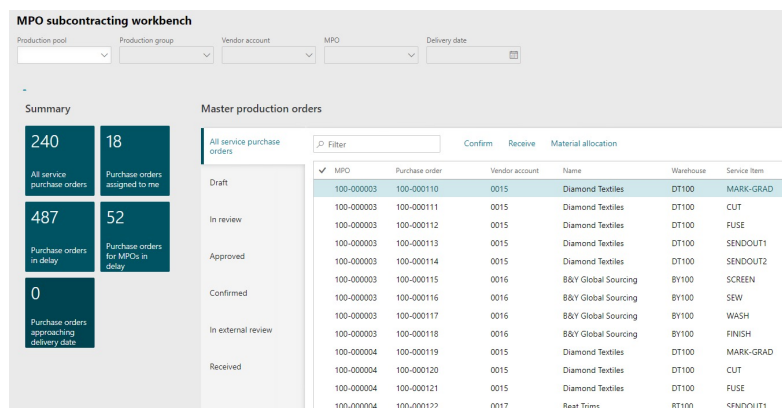
# Hautellogic by Visionet Systems

## Resilient Supply Chain

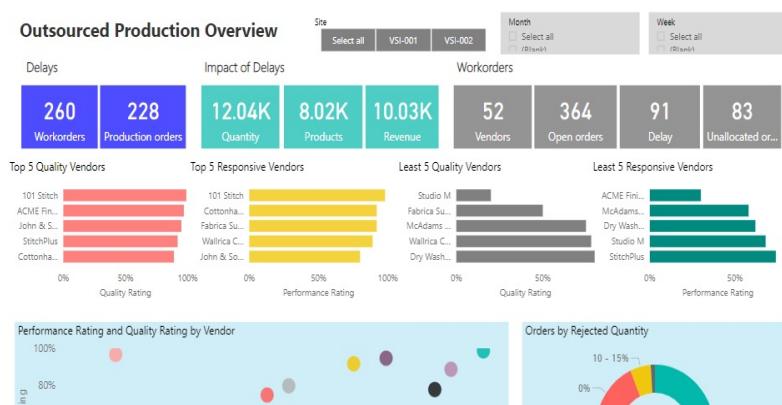
### Master production order issuance



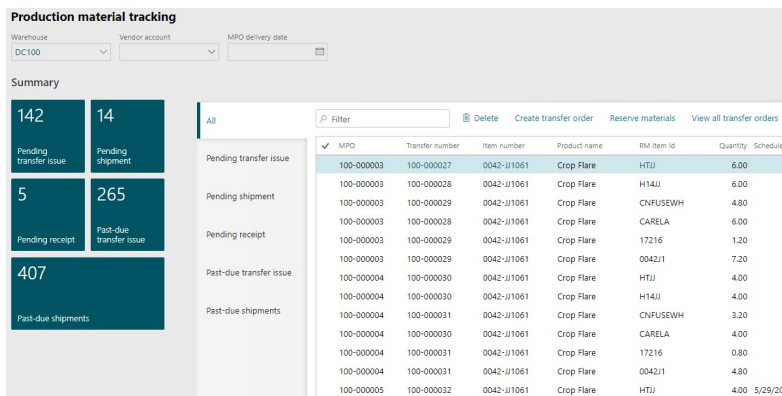
### Subcontracting workbench



### Outsourcing performance dashboard



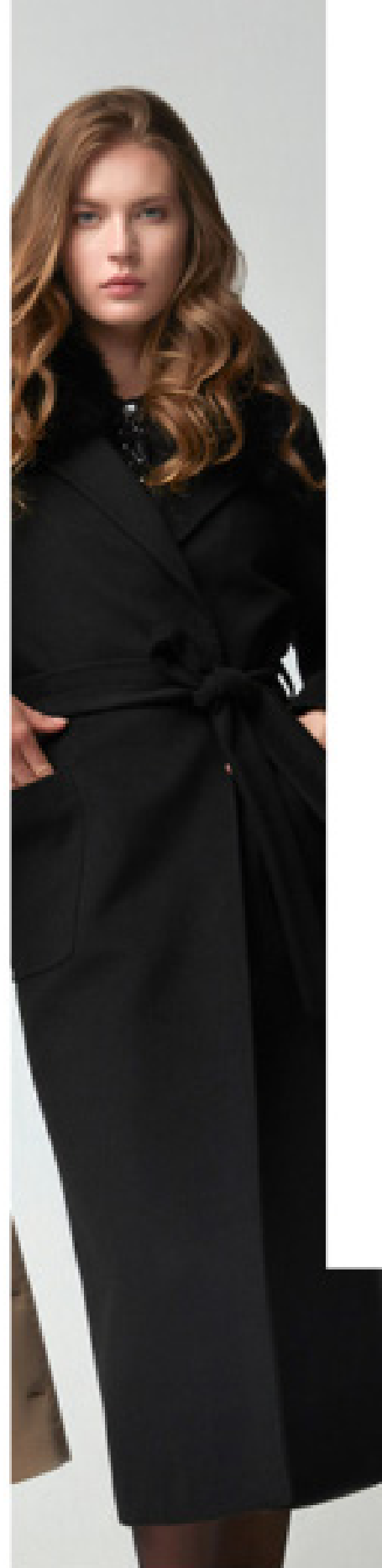
### Production material tracking

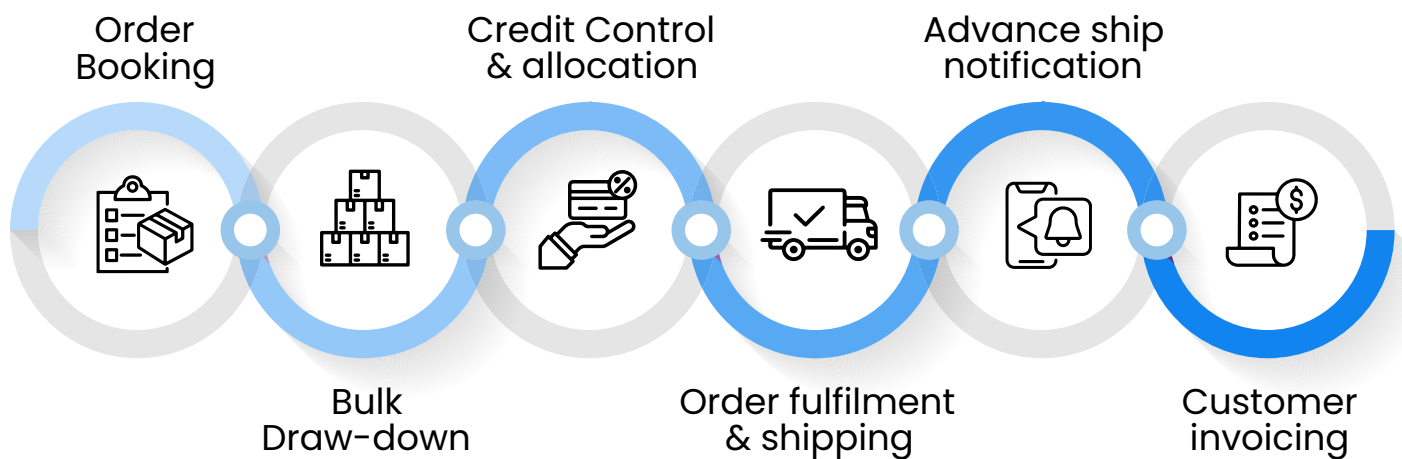




# Business Operations Analytics & Customer Insights

Hautellogic by Visionet Systems uplifts business operations through analytics and customer insights that provide a holistic decision-making framework. It enables advanced analytical reporting capabilities powered by Azure's serverless, scalable event-processing engine.





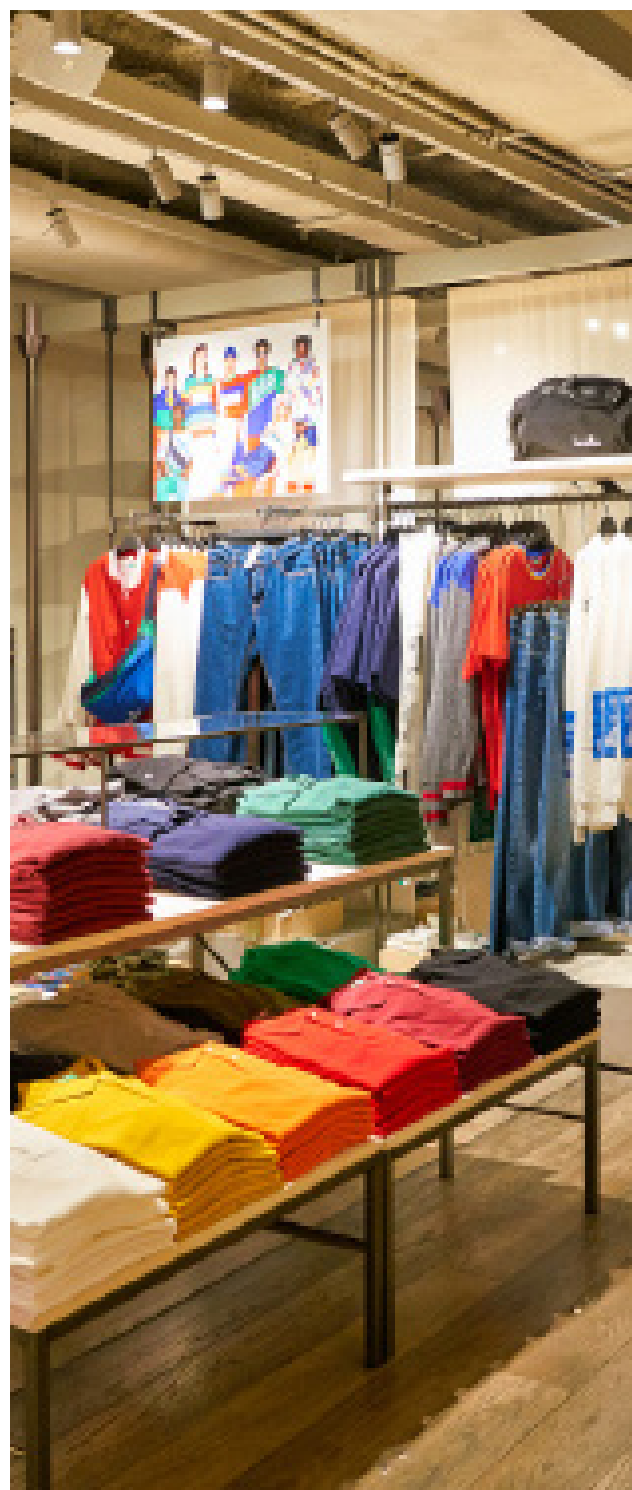
## Features

Customer Store & DC	Customer Order Overrides
Sales Order Line Group	Bulk Order Management
AR Factor/ Credit Management	Sales Order Allocation
SO Change Tracking	SO Mass Cancellation & Maintenance
Prepack Order Entry	Parcel Shipping Integration
GS1/ UCC128 Label Printing	Parcel Carrier Rate Shopping

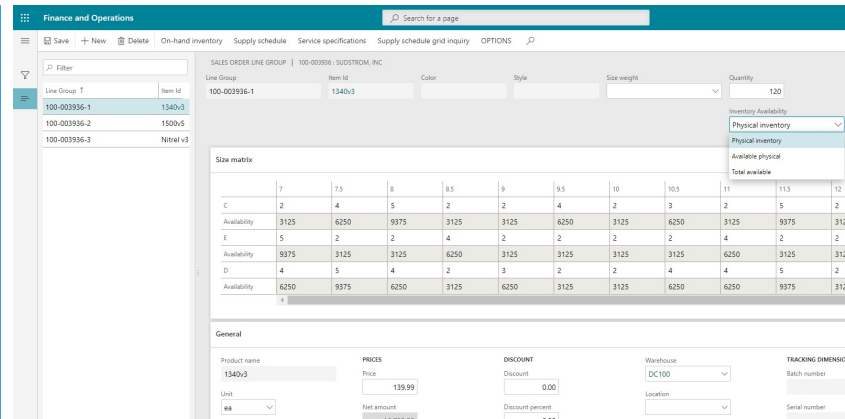
Fully-integrated with AI-enabled systems to gain insights and drive deep customer engagement

Advanced analytical reporting capabilities powered by Azure's serverless, scalable event-processing engine

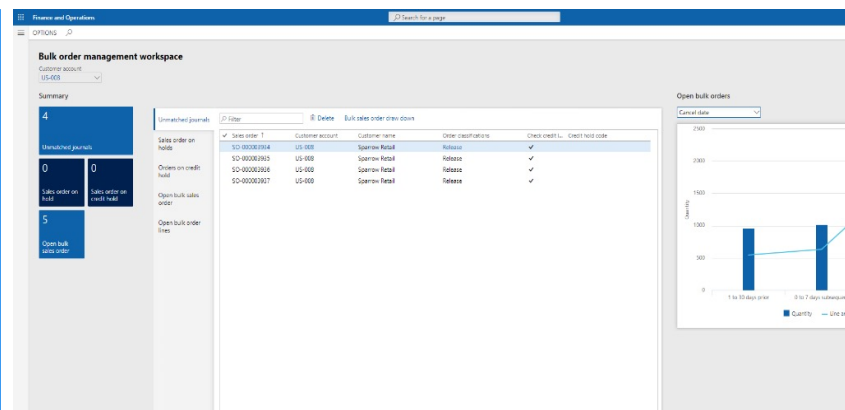
Browser-based access with built-in reporting capabilities



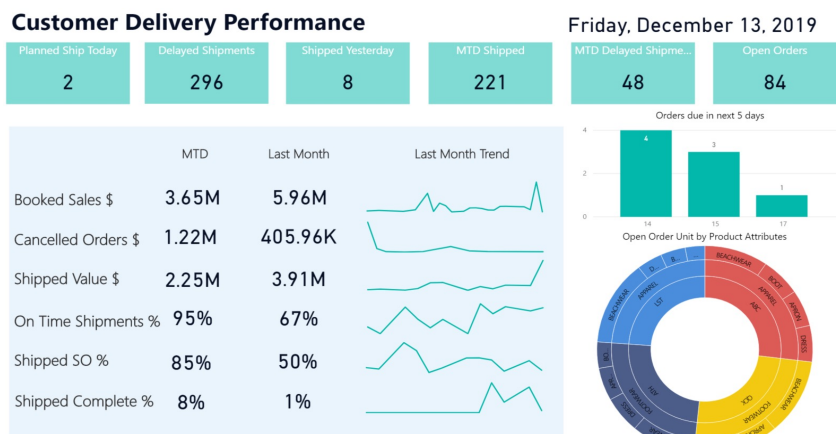
## Sales order entry (Line Group with Grid)



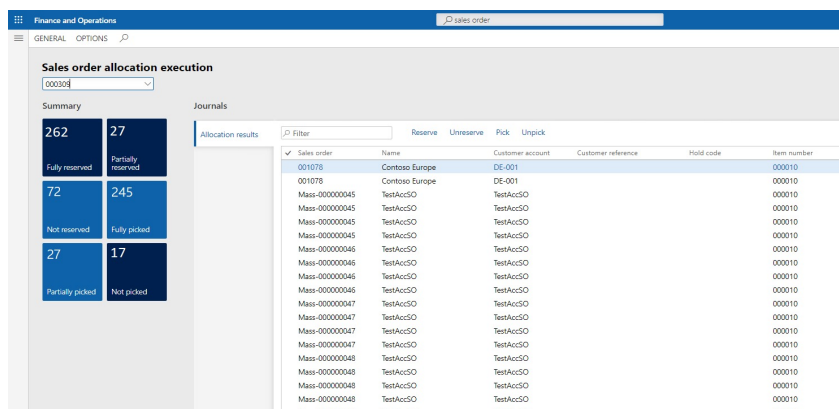
# Bulk order management workspace



Customer  
delivery  
performance



Allocation  
execution  
workspace





# Visionet, Hautellogic by Visionet Systems and Microsoft Dynamics 365



Hautellogic by Visionet Systems is end-to-end solution for apparel & footwear, built on powerful Dynamics 365 Finance & Operations platform. It enables accelerated implementation of intelligent demand & supply planning, digital sourcing & manufacturing, wholesale, eCommerce, POS/ store operations, supply chain integration and EDI.

## Connected Supply Chain



Connect global supply chain through vendor collaboration

## Faster Time To Market



Accelerated speed to market through digitized collaboration

## Subscription-Based Pricing

The pricing model is designed so that no upfront licensing costs are required



## Customer success

### Michael Gerald achieves operational efficiency



"Visionet was carefully chosen as our partner based on fashion and apparel industry expertise. The modularity of the Hautellogic by Visionet Systems solution has delivered us process and data unification and increased visibility into key business data."

Dave McCullagh, CFO,  
Michael Gerald Ltd.

#### Enhanced Decision Making



Hautellogic by Visionet Systems facilitated accurate decision-making by providing complete operational visibility, real-time analytics, and actionable insights

#### Simplified Supply Chain



Hautellogic by Visionet Systems simplified and connected MGL's supply chain through vendor collaboration, integrated merchandising, intelligent shipping, and faster onboarding of 3PL providers and partners

#### Real Time Inventory Visibility

Real-time inventory visibility enabled supply and demand balancing that led to improved operational efficiencies



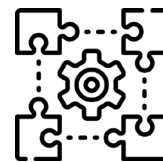
## Channel Partner Success

End-to-end digital transformation with Microsoft



### High Operational Visibility

Actionable insights backed by advanced business intelligence enables Khaadi to understand its customers needs and the state of its global fashion supply chain



### Maintenance Free Solution

Using Dynamics 365 on Azure Cloud, Hautelogic by Visionet Systems freed Khaadi from frequent platform updates and other technical complexities



### Real Time Operations

Retail analytics provide detailed sales and inventory updates to store managers and executives within minutes

"This omnichannel solution is helping us to exceed the ever-evolving expectations and needs of our customers by providing them with an enhanced, brand-right experience across all channels," said Michael Saunders, Chief Operating Officer (COO). "This solution provides a cost-effective platform to facilitate our expansion and growth across all channels."

– Rehan Qadri, CIO, Khaadi

# Transform your Fashion & Apparel business with Hautellogic by Visionet Systems



Get a free trial:

<https://www.visionet.com> Call for more  
information: 609-452-0700 x 1143 Ask a  
question via email: [sales@visionet.com](mailto:sales@visionet.com)  
Also available on Microsoft AppSource



Gold Cloud Platform  
Gold Cloud Business applications  
Gold Cloud Productivity  
Gold Customer  
Gold Data Analytics  
Gold DevOps